

3.1USB连接器type-C母座16Pin贴片式SMT贴板带双压片type-c母座

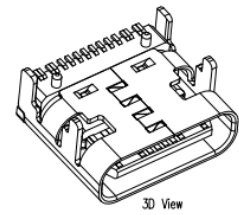
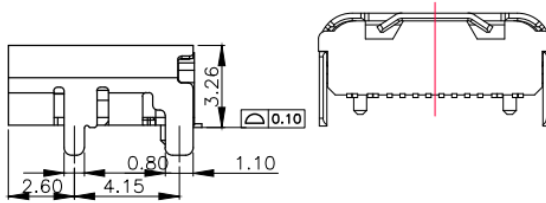
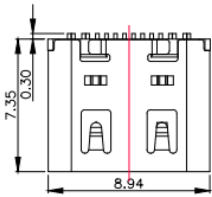
产品名称	3.1USB连接器type-C母座16Pin贴片式SMT贴板带双压片type-
生产厂家	东莞市汉博电子科技有限公司
价格	0.36/个
规格参数	汉博:HANBO Type-C:MC-107DM 广东省:东莞市
公司地址	塘厦镇莲湖南路68号1号楼330室
联系电话	15377753702

产品详情

3.1USB连接器type-C母座16Pin贴片式SMT贴板带双压片type-c母座



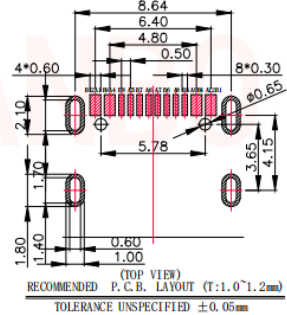
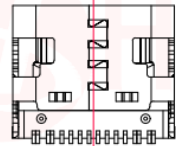
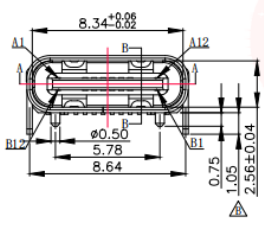
REV.	ECN NO OR DESCRIPTION	REVISED	DATE



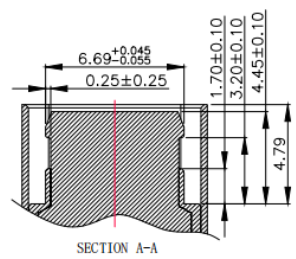
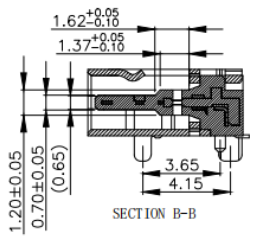
3D View

SPECIFICATION:

- Material:
 - HOUSING&MOLDING:LCP,UL94 V-0
 - CONTACTS:COPPER ALLOY T=0.20mm
 - MIDDLE CLIP:SUS301-1/2H,T=0.15mm
 - SHELL:SUS, T=0.30mm
- Mechanical:
 - 2.1.Mating force:5~20Nf Max.;
 - 2.2.Unmating force:6~20Nf Min.;
 - 2.3.Durability:10000 Cycles;
- Electrical:
 - 3.1.Current Rating:3A Max.;
 - 3.2.Voltage Rating:20V Max.;
 - 3.3.Dielectric Withstanding voltage:100VAc;
 - 3.4.Contact resistance:40m Ohms Max.;
 - 3.5.Insulation Resistance:100M Ohms Min.;
- Environmental:
 - 4.1.Operating temperature:-40°C~+85°C;
 - 4.2.Wetting Temperature:265±5°C,5±0.5s



PIN ASSIGNMENT											
A1	A2	A3	A4	A5	A6	A7	A8	A9	A10	A11	A12
GND			VBUS	CC1	D+	D-	SBU1	VBUS			GND
			VBUS	SBU2	D-	D+	CC2	VBUS			GND
B12	B11	B10	B9	B8	B7	B6	B5	B4	B3	B2	B1



UNLESS OTHERWISE SPECIFIED TOLERANCES

DECIMALS: .X :±0.50 .XX :±0.25 .XXX :±0.15

ANGLES: .X° :±3.0° .XX° :±2.5° .XXX° :±2.0°

TITLE: TYPE-C 16PIN 板上型四脚插件 带双压片L=7.35mm

DWN xiong PART NO. MC-107DM

CHKD lee SCALE:1:1 UNIT: mm

APVD wang SIZE: A4 SHEET:1OF 1 REV: A4

CUSTOMER COPY

东莞市汉博电子科技有限公司
DONGGUAN HANBO TECHNOLOGY CO., LTD