

# 1USB连接器type-C母座16Pin贴片式SMT贴板type c插座typec母座

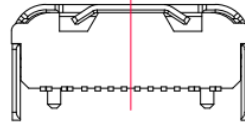
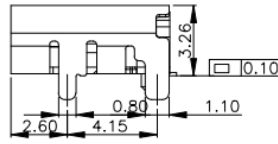
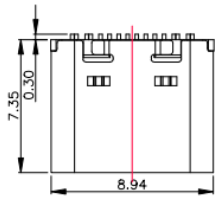
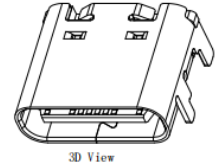
产品名称	1USB连接器type-C母座16Pin贴片式SMT贴板type c插座typec
生产厂家	东莞市汉博电子科技有限公司
价格	0.38/个
规格参数	汉博:Type-C Type-C:MC-107D 广东省:东莞市
公司地址	塘厦镇莲湖南路68号1号楼330室
联系电话	15377753702

## 产品详情

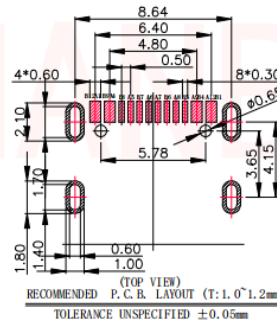
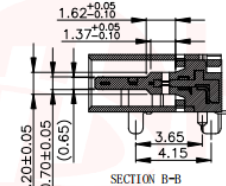
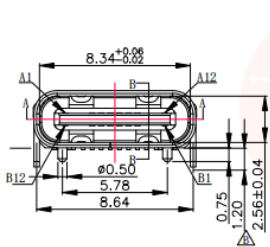
1USB连接器type-C母座16Pin贴片式SMT贴板type c插座typec母座



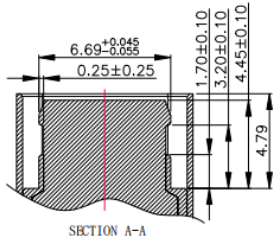
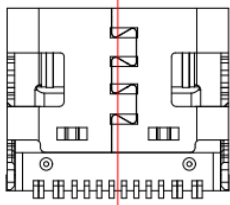
REV.	ECN NO OR DESCRIPTION	REVISED	DATE



- SPECIFICATION:**
- Material:
    - HOUSING&MOLDING:LCP,UL94 V-0
    - CONTACTS:COPPER ALLOY T=0.20mm
    - MIDDLE CLIP:SUS301-1/2H,T=0.15mm
    - SHELL:SUS, T=0.30mm
  - Mechanical:
    - 2.1.Mating force:5~20Nf Max.;
    - 2.2.Unmating force:6~20Nf Min.;
    - 2.3.Durability:10000 Cycles;
  - Electrical:
    - 3.1.Current Rating:3A Max.;
    - 3.2.Voltage Rating:20V Max.;
    - 3.3.Dielectric Withstanding voltage:100Vac;
    - 3.4.Contact resistance:40m Ohms Max.;
    - 3.5.Insulation Resistance:100M Ohms Min.;
  - Environmental:
    - 4.1.Operating temperature:-40°C~+85°C;
    - 4.2.Wetting Temperature:265±5°C,5±0.5s



PIN DEFINE TABLE			
PIN	SIGNAL	PIN	SIGNAL
A12	GND	B1	GND
A11		B2	
A10		B3	
A9	VBUS	B4	VBUS
A8	SBUI	B5	CC2
A7	D-	B6	D+
A6	D+	B7	D-
A5	CC1	B8	SBUI2
A4	VBUS	B9	VBUS
A3		B10	
A2		B11	
A1	GND	B12	GND



UNLESS OTHERWISE SPECIFIED TOLERANCES



东莞市汉博电子科技有限公司  
DONGGUAN HANBO TECHNOLOGY CO., LTD

DECIMALS:	ANGLES:	TITLE	TYPE C	16PIN 母座板上型四脚插件L=7.35mm
X :±0.50	.X' :±3.0'	DWN	xiong	PART NO. MC-107D
.X :±0.35	.XX' :±2.5'	CHKD	lee	SCALE:1:1 UNIT: mm
.XX :±0.25	.XXX' :±2.0'	APVD	wang	SIZE: A4 SHEET:10F 1 REV: A4
.XXX :±0.15				CUSTOMER COPY