

防水DC插座圆形2PIN两脚插板立式厂家LZG充电接口2A电源插座IPX7

产品名称	防水DC插座圆形2PIN两脚插板立式厂家LZG充电接口2A电源插座IPX7
生产厂家	广东小迈实业有限公司
价格	/
规格参数	品牌:LZG DC母座:2pin插板圆形 特性:防水IPX7
公司地址	东莞市横沥镇西城一区西聚路1号
联系电话	18938295875

产品详情

防水DC插座圆形2PIN两脚插板立式厂家LZG充电接口2A电源插座IPX7

型号：ZB30016-02DBAP-A

插座类型：DC插座，电镀工艺：镀金，额定电压：12V，额定电流：2A，包装：1000PCS/包



ZB30016-02DBAP-A

IPX7
IP67
12V/2A



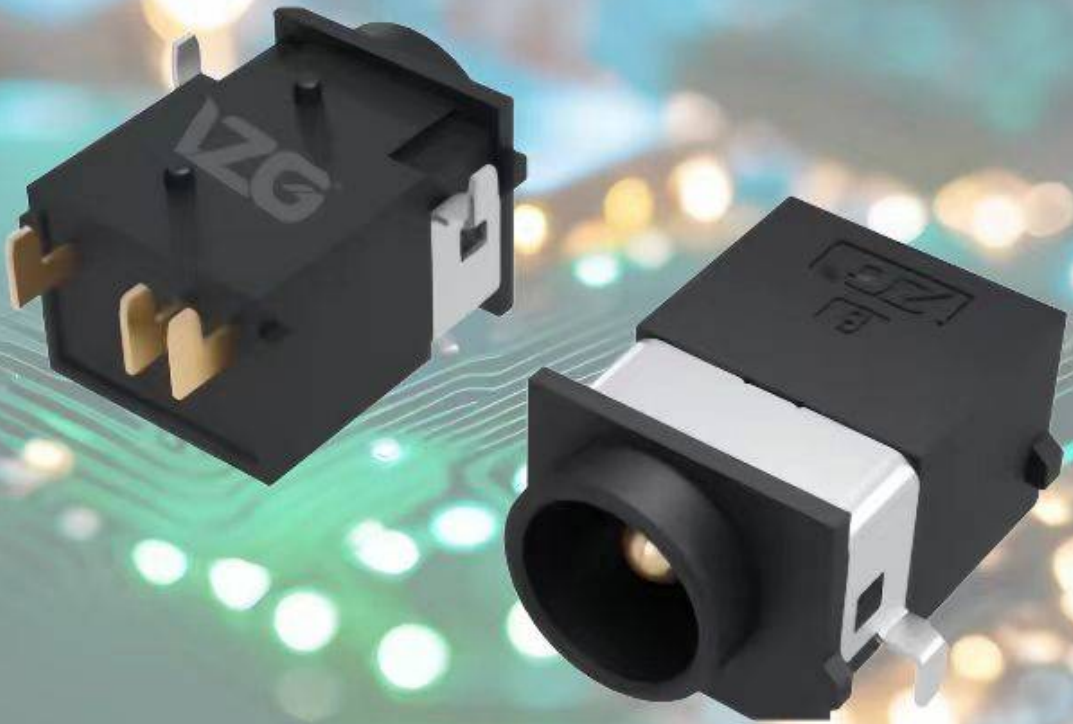
防水DC插座

致力提供防水连接器解决方案

防水



LZG[®]



ZB30016-02DBAP-A

防水DC插座

产品应用

IZG



汽车电子
Automotive Electronics



扩展坞、路由器
Docking Station, Router



通讯设备
Communication Equipment



家用电器
Household Appliances



安防监控
Security Monitoring



蓝牙音响、家庭音响
Bluetooth Audio, Home Audio



智能家居
Smart Home



专注防水连接器生产制造



waterproof DC socket

∨ NOTES:

1. CONTACT CURRENT RATING: 2A.
2. CONTACT RESISTANCE: 60mΩ MAX.
3. INSULATION RESISTANCE: 100MΩ MIN.
4. DIELECTRIC WITHSTANDING: 500V AC MIN.
5. DURABILITY: 5,000CYCLES MIN.
6. CONNECTOR MATING FORCES: 2.94~29.4N(0.30~3.00Kgf).
7. CONNECTOR UNMATING FORCES: 2.94~29.4N(0.30~3.00Kgf).
8. WATERPROOF STRENGTH: IP-X7.

ISO
9001:2015

✓
RoHS

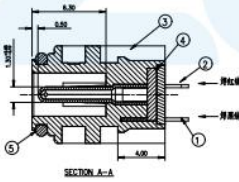
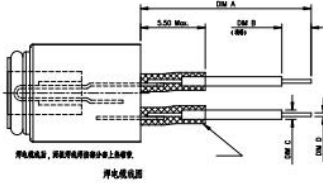
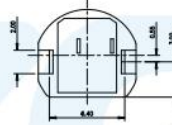
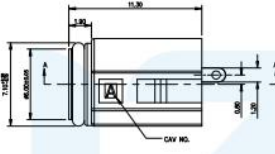
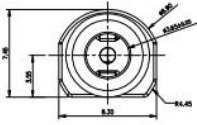
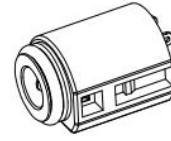
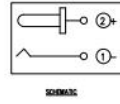
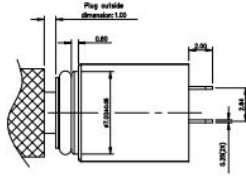
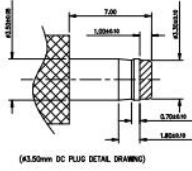
✓ ISO
14001:2015



LZG INDUSTRIAL CO.,LTD

RoHS
Compliant

ZONE	ECN.N.O.	DESCRIPTION	DRAWING	DATE
A		INITIAL	林佳蔚	2023.10.24



- NOTES:
- CONTACT CURRENT RATING:2A;
 - CONTACT RESISTANCE:60mΩ MAX;
 - INSULATION RESISTANCE:100MΩ MIN;
 - DELECTRIC WITHSTANDING:500V AC MIN;
 - DURABILITY:5,000CYCLES MIN;
 - CONNECTOR MATING FORCES:2.94~29.4N(0.30~3.00kgf);
 - CONNECTOR UNMATING FORCES:2.94~29.4N(0.30~3.00kgf);
 - WATERPROOF STRENGTH:IP-X7;

TABLE A

ITEM	PART NUMBER	DIM A	DIM B	DIM C	DIM D
01	DS-037000-130-111	14.50±1.50	2.50 ^{+0.10} _{-0.10}	40.00	40.30
02	DS-037010-130-110	43.50±1.50	1.00±0.10	40.30	40.48
03	DS-037030-130-110	FORM, 8P-0300			
01	CONTACT A	1 PCS	STAINLESS STEEL T=0.25		Au Plated
02	PIA	1 PCS	BRASS T=0.25		Au Plated
03	HOUSING	1 PCS	PAA6+3000F		BLACK UL 94V-0
04	COVER	1 PCS	PAA6+3000F		BLACK UL 94V-0
05	SHIELD	1 PCS	400		RED UL 94V-0
ITEM	PART NAME	QTY	MAX.REFL.	DESCRIPTION	



LZG INDUSTRIAL CO. LTD

DRAWING:	林佳蔚	DATE:	2023.10.24	SCALE:	1:1
CHECK:	林佳蔚	DATE:	2023.10.24	MATERIAL:	*
APPROVAL:	林佳蔚	DATE:	2023.10.24	DWG. NO.:	
DRAWING NO.:	ZB30016-02DBAP-A				
				SHEET	1/1

PART NAME	DC POWER JACK	TOLERANCE UNLESS	0.0±0.25	0.1±2'	UNIT:	mm
PART NO.	ZB30016-02DBAP-A	OTHERWISE SPECIFIED:	0.00±0.15	0.0'±1'		
			0.000±0.10	0.00'±0.5'		