

防水DC电源插座5PIN沉板五脚卧式DC充电插座24V3A防水IPX7厂家LZG

| | |
|------|---|
| 产品名称 | 防水DC电源插座5PIN沉板五脚卧式DC充电插座24V3A防水 |
| 生产厂家 | 广东小迈实业有限公司 |
| 价格 | / |
| 规格参数 | 品牌:LZG DC母座:5pin沉板3A24V 特性:防水IPX7 |
| 公司地址 | 东莞市横沥镇西城一区西聚路1号 |
| 联系电话 | 18938295875 |

产品详情

防水DC电源插座5PIN沉板五脚卧式DC充电插座24V3A防水IPX7厂家LZG

型号：ZB30010-05FBAP-A

插座类型：DC插座，电镀工艺：镀金，额定电压：24V，额定电流：3A



ZB30010-05FBAP-A

IPX7

IP67

24V/3A



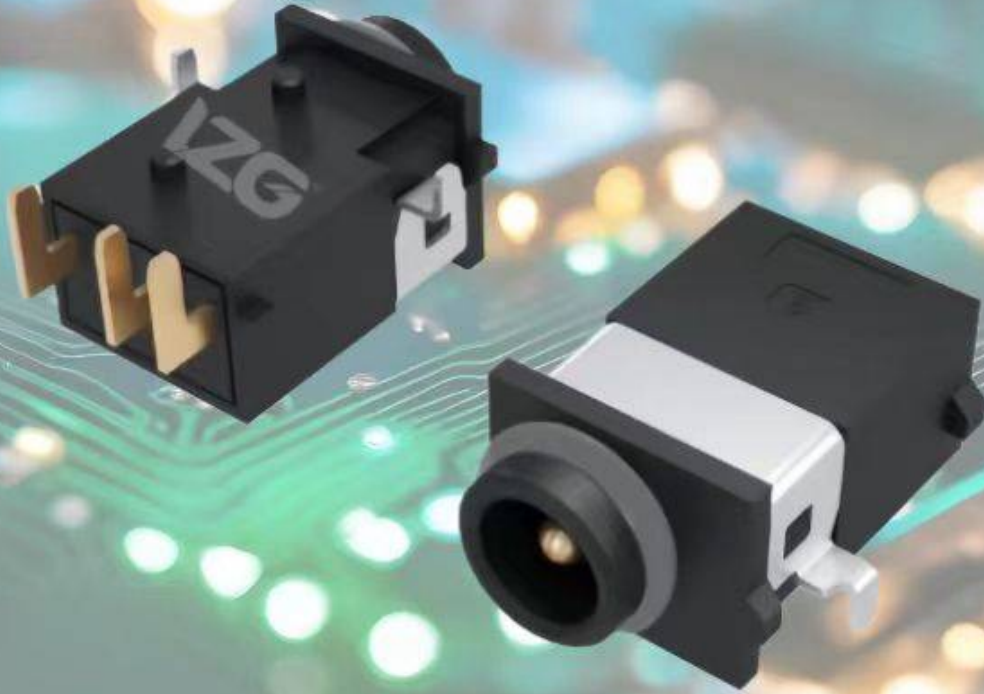
防水DC插座

致力提供防水连接器解决方案

防水



IZG[®]



ZB30010-05FBAP-A

防水DC插座 (1.3针)

产品应用



汽车电子
Automotive Electronics



扩展坞、路由器
Docking Station, Router



通讯设备
Communication Equipment



家用电器
Household Appliances



蓝牙音响、家庭音响
Bluetooth Audio, Home Audio



安防监控
Security Monitoring



智能家居
Smart Home



专注防水连接器生产制造



waterproof DC socket

✓ NOTES:

1. CURRENT RATING: 24V & 3A MAX.
2. CONTACT RESISTANCE: 50mΩ MAX.
3. INSULATION RESISTANCE: 100MΩ MIN.
4. DIELECTRIC WITHSTANDING: 500V AC MIN.
5. DURABILITY: 5000 CYCLES MIN.
6. CONNECTOR MATING FORCES: 3N MIN.
7. CONNECTOR UNMATING FORCES: 35N MAX.
8. OPERATING TEMPERATURE: -25°C TO +85°C.

ISO
9001:2015

✓
RoHS

✓ ISO
14001:2015

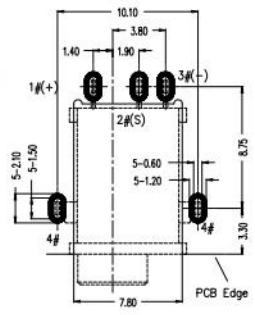
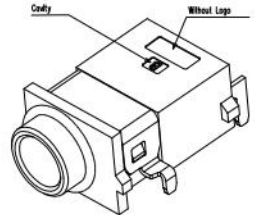
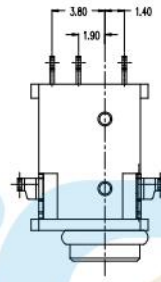
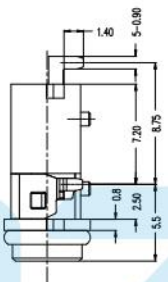
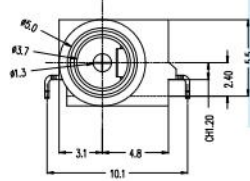
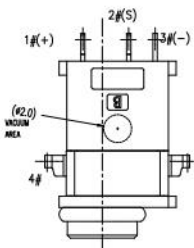
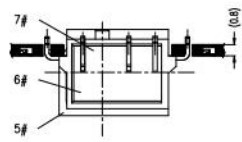


LZG INDUSTRIAL CO.,LTD

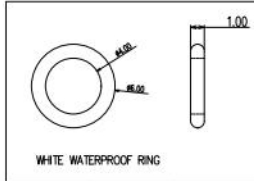
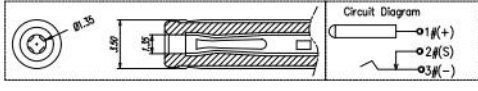
RoHS
Compliant



| ZONE | EC.N.O. | DESCRIPTION | DRAWING | DATE |
|------|---------|-------------|---------|------------|
| A | | INITIAL | 888 | 2023.10.26 |



- NOTES
1. CURRENT RATING: 24V & 1.5A MAX.
 2. CONTACT RESISTANCE: 50mΩ MAX.
 3. INSULATION RESISTANCE: 100MΩ MIN.
 4. DIELECTRIC WITHSTANDING: 500V AC MIN.
 5. DURABILITY: 5000 CYCLES MIN.
 6. CONNECTOR MATING FORCES: 3N MIN.
 7. CONNECTOR UNMATING FORCES: 35N MAX.
 8. OPERATING TEMPERATURE: -25°C TO +85°C.



Not to install the waterproof ring shipment

| 8 | WATERPROOF RING | 1 | BLACKING WHITE |
|------|-----------------|-----|--|
| 7 | SOLE | 1 | SPRINK BLACK |
| 6 | INSU CONP | 1 | HIGH TEMPERATURE BLACK |
| 5 | INSULING | 1 | HIGH TEMPERATURE BLACK |
| 4 | TERMINAL 4# | 1 | STAINLESS STEEL MODEL PLATING |
| 3 | TERMINAL 3# | 1 | COPPER ALLOY MODEL UNDERPLATING OVERALL, AL PLATING ON THE SOLDER AREA |
| 2 | TERMINAL 2# | 1 | COPPER ALLOY MODEL UNDERPLATING OVERALL, AL PLATING ON THE WHOLE |
| 1 | CENTER PIN | 1 | COPPER ALLOY MODEL UNDERPLATING OVERALL, AL PLATING ON THE SOLDER AREA |
| ITEM | NAME | QTY | DESCRIPTION |

LZG LZG INDUSTRIAL CO. LTD

| | | | | | |
|--------------|------------------|-------|------------|-----------|-----|
| DRAWING: | 888 | DATE: | 2023.10.26 | SCALE: | 1:1 |
| CHECK: | 888 | DATE: | 2023.10.26 | MATERIAL: | * |
| APPROVAL: | 888 | DATE: | 2023.10.26 | DWG. NO.: | |
| DRAWING NO.: | ZB30010-05FBAP-A | | | SHEET: | 1/1 |

| | | | | | | |
|-----------|-------------------------------|---------------------------------------|-------------------------------------|---------------------------------|-------|----|
| PART NAME | 01.3 DC WATERPROOF POWER JACK | TOLERANCE UNLESS OTHERWISE SPECIFIED: | 0.0±0.25 0.00±0.15 0.000±0.10 | 0.°±2° 0.0°±1° 0.00°±0.5° | UNIT: | mm |
| PART NO. | ZB30010-05FBAP-A | | | | | |